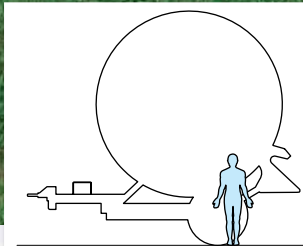


# 1000 gx



|                     |                   |       |        |        |        |        |
|---------------------|-------------------|-------|--------|--------|--------|--------|
| Slangdiameter       | mm                | 110   | 120    | 125    | 135    | 140    |
| Standard slanglängd | m                 | 680   | 670    | 650    | 520    | 480    |
| Max slanglängd      | m                 | 720   | 700    | 670    | 540    | 500    |
| Bevattningsvolym    | m <sup>3</sup> /h | 29-90 | 40-130 | 44-140 | 44-160 | 52-175 |
| Munstycksdiameter   | ø mm              | 20-28 | 24-34  | 24-36  | 24-40  | 26-42  |